



New River Crescent, Palmers Green, London, N13
£450,000 Leasehold

Anthony Webb
ESTATE AGENTS

New River Crescent, Palmers Green, London, N13

Need to work from home/run a business?

A unique CHAIN FREE opportunity to purchase a first floor two double bedroom maisonette with GARAGE and rear section of secluded paved garden which has several heated out buildings including a cinema room, office, storage/utility shed and a w.c.

New River Crescent is located between Hazelwood Lane and Hedge Lane and is ideally situated for Green Lanes shops, restaurants, bus routes and mainline station into Moorgate. There are several green spaces nearby including The New River, Hazelwood recreation ground and Broomfield Park. Hazelwood primary school is also a short walk away.

940+ lease remaining • £14 per annum ground rent • No service charges • Enfield council tax band C • Own front door • Side access to garden • First floor landing with loft access with potential to convert subject to usual consents • Spacious living room with fireplace • Kitchen • Bathroom • Bedrooms have fitted wardrobes/cupboards • Double glazing • Gas central heating • Garage with power and light via rear access road • Rear paved garden space measures 50ft x 27ft and houses a heated timber built living/cinema space with veranda, a heated timber built office with internet connection, a storage/utility shed and a chemical w.c. The garden has cctv, power and lights throughout.

- Two double bedrooms
- First floor maisonette
- Own front door/loft space
- Living room
- Kitchen+bathroom
- Garage to rear
- Rear section of garden
- Several out buildings





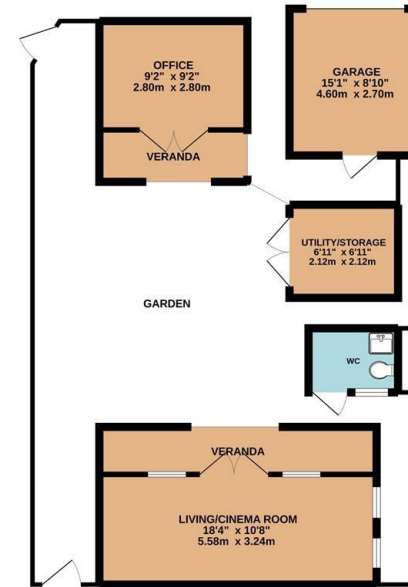
New River Crescent Palmers Green London N13 5RE

Tenure: Leasehold
Gross Internal Area: 667.00 sq ft

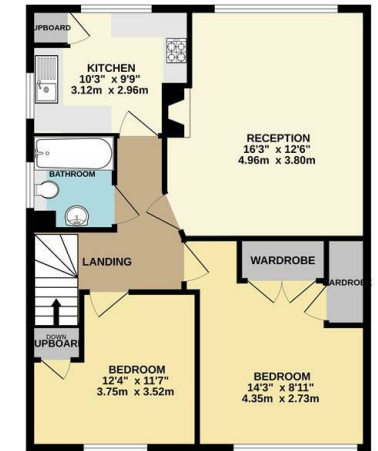


Energy Efficiency Rating		Current	Potential
Very energy efficient - lower running costs			
(92 plus) A			
(81-91) B			
(69-80) C			
(55-68) D			
(39-54) E			
(21-38) F			
(1-20) G			
Not energy efficient - higher running costs			
England & Wales		EU Directive 2002/91/EC	
Environmental Impact (CO ₂) Rating		Current	Potential
Very environmentally friendly - lower CO ₂ emissions			
(92 plus) A			
(81-91) B			
(69-80) C			
(55-68) D			
(39-54) E			
(21-38) F			
(1-20) G			
Not environmentally friendly - higher CO ₂ emissions			
England & Wales		EU Directive 2002/91/EC	

GARDEN/OUTBUILDINGS
1302 sq.ft. (121.0 sq.m.) approx.



1ST FLOOR
667 sq.ft. (62.0 sq.m.) approx.



TOTAL FLOOR AREA: 1970 sq.ft. (183.0 sq.m.) approx.

Whilst every attempt has been made to ensure the accuracy of the floorplan contained here, measurements of doors, windows, rooms and any other items are approximate and no responsibility is taken for any error, omission or mis-statement. This plan is for illustrative purposes only and should be used as such by any prospective purchaser. The services, systems and appliances shown have not been tested and no guarantee as to their operability or efficiency can be given.
Made with Metropix ©2022

Property particulars as supplied by Anthony Webb Estate Agents are set out as a general outline in accordance with the Property Misdescriptions Act (1991) only for the guidance of intending purchasers of lessees, and do not constitute any part of an offer or contract. Details are given without any responsibility, and any intending purchasers, lessees or third parties should not rely on them as inspection or otherwise as to the correctness of each of them. We have not carried out a structural survey and the services, appliances and specific fittings have not been tested. All photographs, measurements, floor plans and distances referred to are given as a guide only and should not be relied upon for the purchase of carpets or any other fixtures statements or representations of fact, but must satisfy themselves by or of fittings, gardens, roof terraces, balconies and communal gardens as well as tenure and lease details cannot have their accuracy guaranteed for intending purchasers. Lease details, service ground rent (where applicable) are given as a guide only and should be checked and confirmed by your solicitor prior to exchange of contracts. no person in the employment of Anthony Webb has any authority to make any representation or warranty whatever in relation to this property.

348 Green Lanes, Palmers Green, London N13 5TJ
020 8882 7888
palmersgreen@anthonywebb.co.uk
anthonywebb.co.uk

Anthony Webb
ESTATE AGENTS